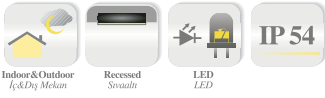
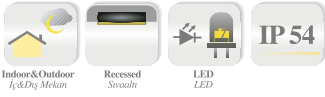




GMP 300

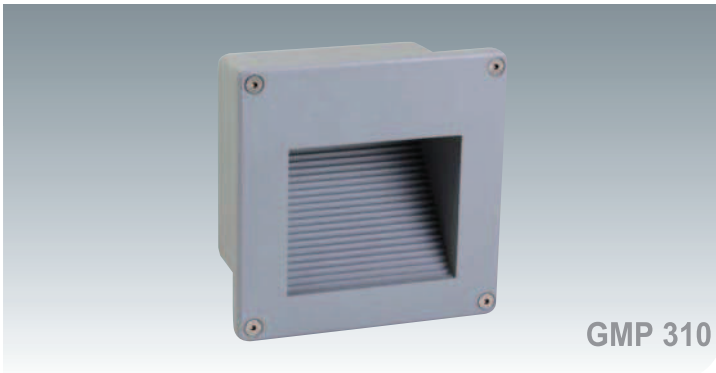
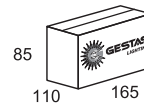


GMP 305



LAMP TYPE	SOCKET	A (mm)	B (mm)	H (mm)	K.G.
1x5 - 1x18 W LED	-	100	160	65	0,65
1x40 W	G6,35	100	160	65	0,9

BOX / KOLI
(mm)

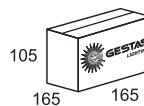


GMP 310



LAMP TYPE	SOCKET	A (mm)	B (mm)	H (mm)	K.G.
1x5 - 1x18 W LED	-	160	160	95	1,1
1x40 W	G6,35	160	160	95	1,3

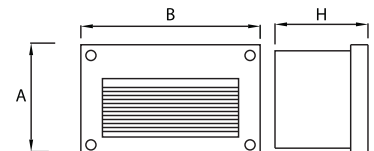
BOX / KOLI
(mm)



GMP SERIES

BODY : Aluminium & Electrostatic Painted
GLASS/DIFFUSER : Acrylic (PMMA)
REFLECTOR : -
ELECTRICAL COMP : LED Power Supply
PROTECTION CLASS: IP 54
OTHER FEATURES : High Temperature and Impact Resistance
 Aluminium & Electrostatic Painted
 Maximum Resistance to Dust, Water and Moisture
USAGE AREAS : Parks, Walking Paths, Structure Surrounding Applications, Sites, Residential, Commercial Complexes, Applications where Decorative Outdoor Lighting Preferred

GÖVDE : Alüminyum & Elektrotatik Boyalı
CAM/DİFÜZÖR : Akriik (PMMA)
REFLEKTÖR : -
ELEKTRİKSEL KOMP: LED Güç Kaynağı
KORUMA SINIFI : IP 54
DİĞER ÖZELLİKLER : Yüksek Isı ve Darbe Dayanımı
 Alüminyum & Elektrotatik Boyalı
 Toz, Nem ve Suya Karşı
 Maksimum Dayanıklılık
KULLANIM ALANLARI : Parklar, Yürüyüş Yolları, Bina çevreleri, Siteler, Konut Alanları-İş Merkezi Çevre Aydınlatmaları, Dekoratif Aydınlatmanın Tercih Edildiği Mekanlar



OUTDOOR WALLWASHERS CEILING / WALL / UNDERGROUND /
DIŐ MEKAN APLİKLER TAVAN / DUVAR / YERE GÖMME
WALL & OVERHEAD / DUVAR & TAVAN APLİKLER

