



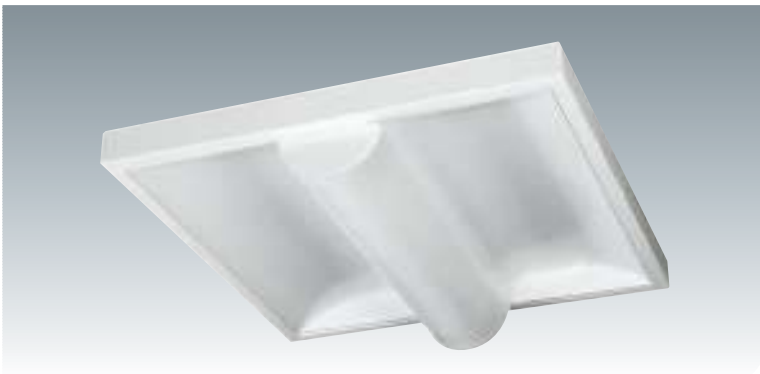
LAMP TYPE	SOCKET	A (mm)	B (mm)	H (mm)	K.G.
1x36 W CT	2G11	645	645	90	5,6
1x40 / 1x55 W CT	2G11	645	645	90	5,6
2x24 / 2x36 W CT	2G11	645	645	90	5,6
2x40 / 2x55 W CT	2G11	645	645	90	5,6
2x18 W T8	G13	645	645	90	6,1
2x14 / 2x24 W T5	G5	645	645	90	5,6



GFSP2-CTV

BODY : DKP Metal & Electrostatic Painted
REFLECTOR : Indirect Lighting with Perforated Reflector
ELECTRICAL COMP : Magnetic / Electronic / Dimmable Ballast, Emergency Kit Additionally Applicable
PROTECTION CLASS: IP 20
OTHER FEATURES : Optional Matt / Bright / Striped Aluminium Side Reflectors
USAGE AREAS : Offices, Hallways, Stairs, Stores, Hotels, Conference Halls, Shopping Centers, Structure Entrances, Classrooms, Custom and Decorative Locations

GÖVDE : DKP Sac & Elektrostatik Boyalı
REFLEKTÖR : Perforeli Reflektör ile Endirekt Aydınlatma
ELEKTRİKSEL KOMP: Manyetik / Elektronik / Dim Edilebilir Balast ve Ek Uygulanabilir Emergency Kit (Acil Kit)
KORUMA SINIFI : IP 20
DİĞER ÖZELLİKLER : Opsiyonel Mat / Parlak / Çizgili Alüminyum Yan Aynalar
KULLANIM ALANLARI : Ofisler, Koridorlar, Merdivenler, Mağazalar, Oteller, Konferans Salonları, Alışveriş Merkezleri, Bina Girişleri, Derslikler, Özel ve Dekoratif Mekanlar



LAMP TYPE	SOCKET	A (mm)	B (mm)	H (mm)	K.G.
1x36 W CT	2G11	600	600	60	5,5
1x40 / 1x55 W CT	2G11	600	600	60	5,5
2x24 / 2x36 W CT	2G11	600	600	60	5,5
2x40 / 2x55 W CT	2G11	600	600	60	5,5
2x18 W T8	G13	600	600	60	5,7
2x14 / 2x24 W T5	G5	600	600	60	5,6



GFSP2D-CTVD

