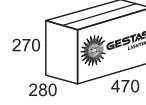


LAMP TYPE	SOCKET	A (mm)	B (mm)	H (mm)	K.G.
1x12/1x16/1x20 W ECO FL	E27	260	455	255	2,75

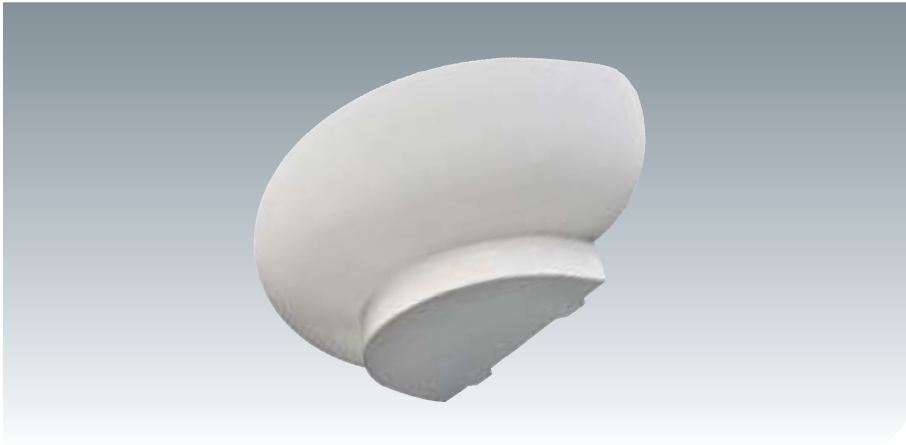
BOX / KOLİ
(mm)



GAP 020

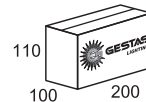
- BODY** : Aluminium Die-Cast & Electrostatic Painted
- GLASS/DIFFUSER** : Semi - Opal Diffuser (GAP 040)
- REFLECTOR** : Special Coated Aluminium Reflector For Maximum Reflection and Efficiency
- ELECTRICAL COMP** : Magnetic / Electronic Option
- PROTECTION CLASS**: IP 20
- OTHER FEATURES** : -
- USAGE AREAS** : Offices, Hallways, Stairs, Stores, Hotels, Conference Halls, Shopping Centers, Structure Entrances, Classrooms, Custom and Decorative Locations

- GÖVDE** : Alüminyum Döküm & Elektrostatik Boyalı
- CAM/DİFÜZÖR** : Yarı Opal Cam (GAP 040)
- REFLEKTÖR** : Maksimum Yansıma ve Verim için Özel Kaplamalı Alüminyum Reflektör
- ELEKTRİKSEL KOMP**: Manyetik / Elektronik seçeneği.
- KORUMA SINIFI** : IP 20
- DİĞER ÖZELLİKLER** : -
- KULLANIM ALANLARI** : Ofisler, Koridorlar, Merdivenler, Mağazalar, Oteller, Konferans Salonları, Alışveriş Merkezleri, Bina Girişleri, Derslikler, Özel ve Dekoratif Mekanlar



LAMP TYPE	SOCKET	A (mm)	B (mm)	H (mm)	K.G.
1x40 W ENCAN	E14	85	183	96	0,65
1x10 / 1x14 W ECO	E14	85	183	96	0,92

BOX / KOLİ
(mm)



GAP 040

