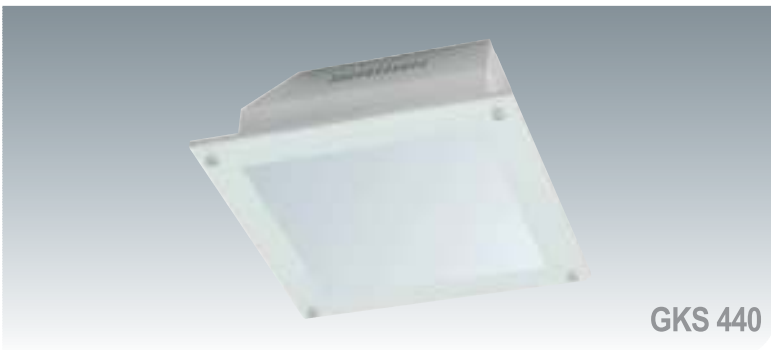
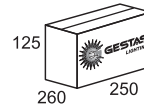


GKS 300

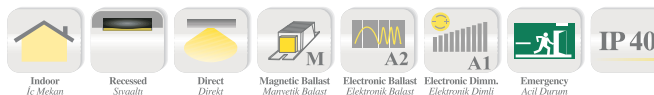


LAMP TYPE	SOCKET	A (mm)	B (mm)	H (mm)	K.G.
2x18 W CT	G24d	245	245	115	3,4
2x26 W CT	G24d	245	245	115	3,5

BOX / KOLİ
(mm)



GKS 440



LAMP TYPE	SOCKET	A (mm)	B (mm)	H (mm)	K.G.
2x18 W CT	G24d	190	190	90	3,6
2x26 W CT	G24d	190	190	90	3,7
1x70 W M.H.	G12	190	190	90	4,1

BOX / KOLİ
(mm)



GKS

- BODY** : DKP Metal & Electrostatic Painted
- GLASS/DIFFUSER** : Tempered Glass (GKS 440)
- REFLECTOR** : Bright or Matt Aluminium Inner Reflector
"+" Type Reflector Painted in Body Color (GKS 300)
- ELECTRICAL COMP** : Magnetic / Electronic / Dimmable Ballast, Emergency Kit Additionally Applicable
- PROTECTION CLASS**: IP 20
IP 40 (GKS 440)
- OTHER FEATURES** : Easy Montage With Integrated Ballast and Connectors
- USAGE AREAS** : Offices, Shops, Hotels, Conference Halls, Classrooms and Similar High-Precision Optical Light Distribution Demanded Interior Applications Paying Attention to Decoration

- GÖVDE** : DKP Sac & Elektrostatik Boyalı
- CAM/DİFÜZÖR** : Temperli Cam (GKS 440)
- REFLEKTÖR** : Parlak veya Mat Alüminyum İç Reflektörler
Gövde Renginde Boyalı "+" Tip Reflektör (GKS 300)
- ELEKTRİKSEL KOMP**: Manyetik / Elektronik / Dim Edilebilir Balast ve Ek Uygulanabilir Emergency Kit (Acil Kit)
- KORUMA SINIFI** : IP 20
IP 40 (GKS 440)
- DİĞER ÖZELLİKLER** : Gövdeye Entegre Balast ve Konnektörler ile Kolay Montaj
- KULLANIM ALANLARI** : Ofisler, Mağazalar, Oteller, Konferans Salonları, Derslikler Gibi Yüksek Hassasiyette Optik Işık Dağılımı İstlenen ve Dekoratif Görünüme İhtiyaç Gösterilen İç Mekan Aydınlatma Uygulamaları

