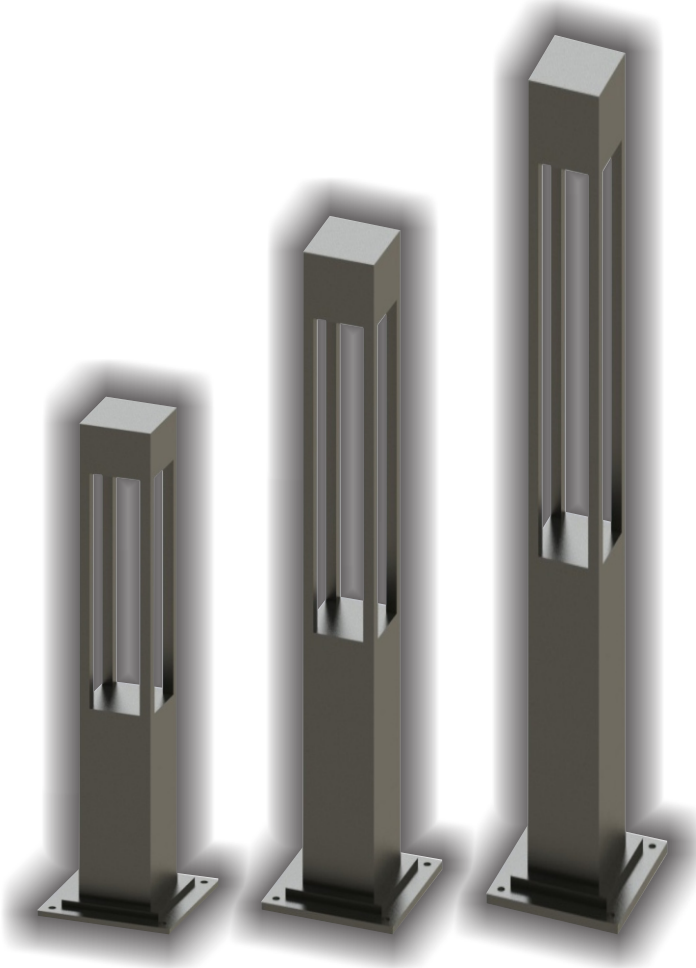


GB 200-LD



BODY : Aluminium Extrusion Housing & Electrostatic Paint
GLASS/DIFFUSER : Tempered Glass
REFLECTOR : -
ELECTRICAL COMP : Switch Mode, Constant Current LED Power Supply
PROTECTION CLASS: IP 65
OTHER FEATURES :
USAGE AREAS : Parks, Walking Paths, Structure Surrounding Applications, Sites, Residential, Commercial Complexes, Applications where Decorative Outdoor Lighting Preferred

GÖVDE : Alüminyum Ekstrüzyon Gövde ve Elektrostatik Boyalı Gövde

CAM/DİFÜZÖR : Temperli Cam

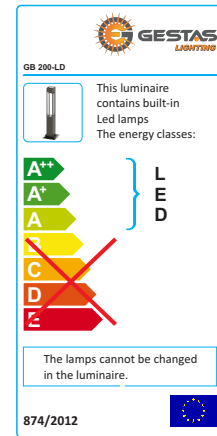
REFLEKTÖR : -

ELEKTRİKSEL KOMP: Switch Mode, Sabit Akım LED Güç Kaynağı





KORUMA SINIFI : IP 65

DİĞER ÖZELLİKLER :

KULLANIM ALANLARI : Parklar, Yürüyüş Yolları, Bina çevreleri, Siteler, Konut Alanları-İş Merkezi Çevre Aydınlatmaları, Dekoratif Aydınlatmanın Tercih Edildiği Mekanlar



LAMP TYPE SOCKET A (mm) B (mm) H (mm) K.G.

	12 W LED	-	100	100	600	3,5
	18 W LED	-	100	100	600	3,5
	20 W LED	-	100	100	600	3,5
	25 W LED	-	150	150	2500	7,5
	30 W LED	-	150	150	2500	7,5
	35 W LED	-	150	150	4000	10,5
	40 W LED	-	150	150	4000	10,5

Flanş ölçüsü / Flange size: 165x165mm / 240x240mm

BOX / KOLİ
(mm)

